

AMERICARE COMPOUNDING

Compounding is our Specialty

- Alprostadil gel single-use, medicated transurethral system for the delivery of alprostadil to the male urethra. Alprostadil is administered by inserting the syringe tip into the urethra after urination and then slowly pressing the syringe plunger so that the gel enters the urethra.
- Alprostadil gel is to be stored in the **REFRIGERATOR**. For more comfortable administration. You may remove the dose from the refrigerator 30 minutes prior to use.
- The medication is stable for 14 days from the day it was made for you, see the expiration date on your bag.
- Alprostadil gel can be compounded in a multitude of strengths, per your physicians order.

Figure 1: The Syringe

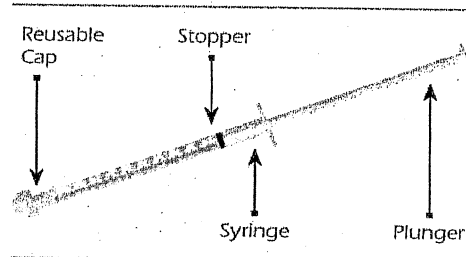


Figure 2: Syringe Preparation

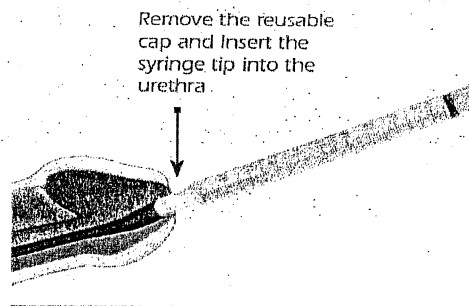
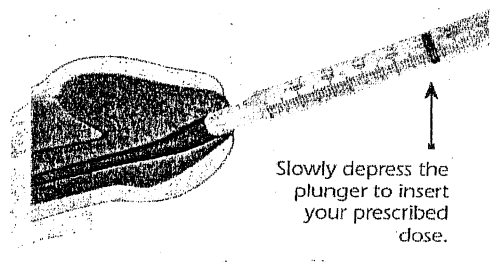


Figure 3: Intracavernosal Injection



AMERICARE COMPOUNDING

319 NASSAU BLVD.
GARDEN CITY SOUTH, NY 11530 | 516-292-5141
MONDAY - FRIDAY 9 AM - 5 PM

AMERICARE COMPOUNDING

319 NASSAU BLVD, GARDEN CITY SOUTH, NY 11530

PHONE: (516) 292-5141 • FAX: (516) 292-2201(OR 292-5154)

SELF-INJECTION OF TRI-MIX/ BI-MIX / QUAD-MIX

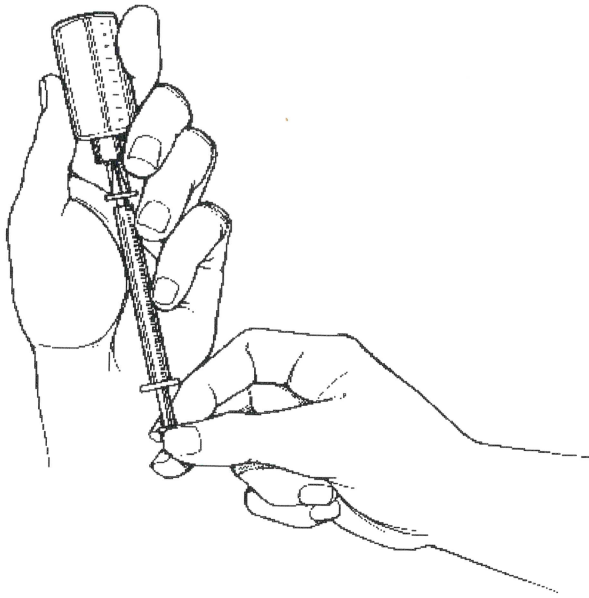
This is a general recommendation for the administration of Bi-Mix, Tri-Mix or Quad Mix. All patients should review the proper administration techniques with their physician prior to administration of any injectable therapy.

Getting Started

- Wash hands and keep the penis clean.
- Have alcohol swab, syringe, and bottle of injectable solution ready.

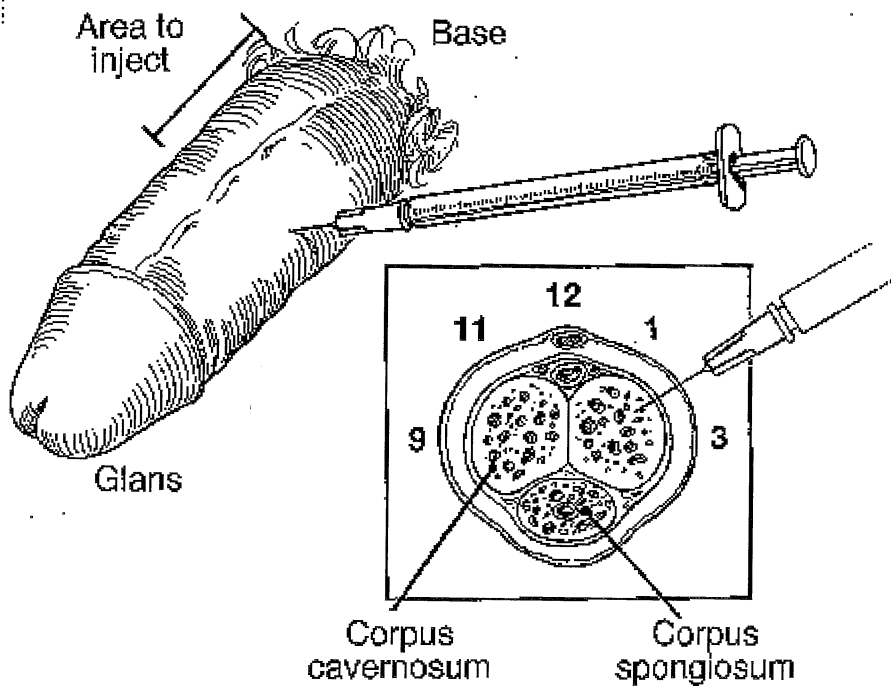
The Syringe

- Wipe the rubber top of the vial containing tri-mix with alcohol.
- Remove the cap of the needle, fill the syringe with air by pulling back the plunger to the desired dosage.
- Insert the needle into the rubber stop of the vial, inject the air, and then turn the vial upside down with the needle inside.
- Slowly pull back the syringe to the dosage required.
- Tap the side of the syringe so the air bubbles float to the top and inject out the air bubbles before use.
- Remove the needle from the bottle.

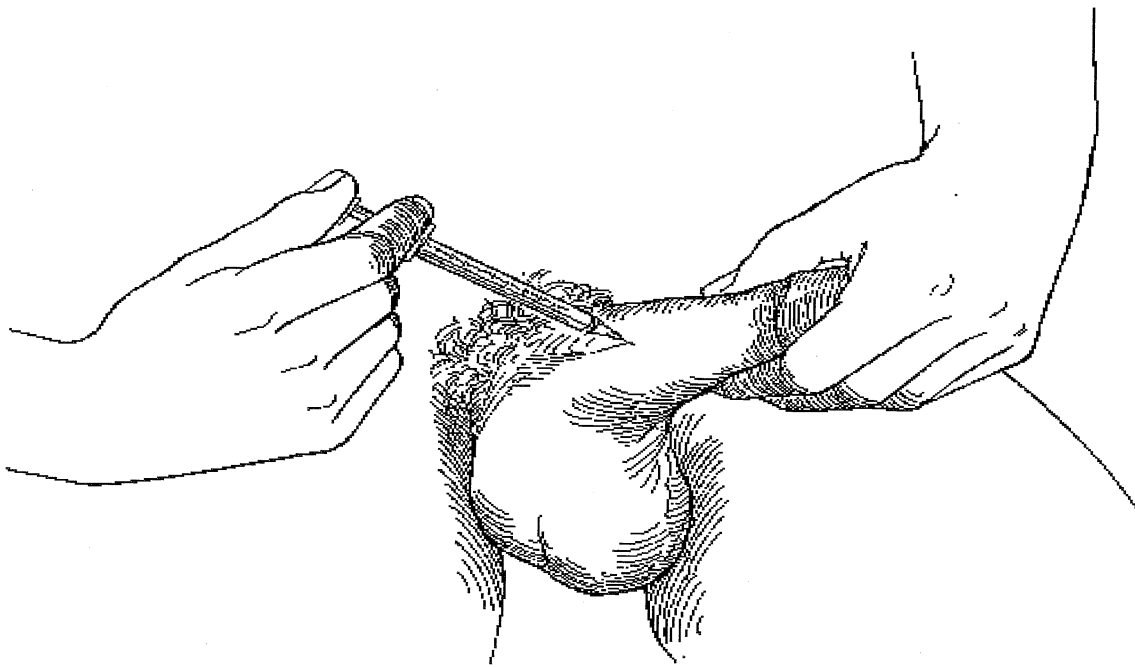


Prepare the Site

- Location of injection is between the base and mid portion of the penis at 9-11 and 1-3 o'clock. Avoid the midline because it can injure the urethra (where urine and sperm pass) and the penile arteries and nerves at 12 o'clock. Avoid any visible veins or arteries on the surface.
- Pull the head of the penis towards to side of the leg and select a site for injection.
- Clean the site with alcohol.



Injection



- Steadily penetrate the skin with the needle at 90°. Push the needle to the end.
- Inject Trimix over a few seconds and withdraw the needle.
- Apply compression at the injection site for 2 minutes. More time may be needed to prevent bleeding.
- Dispose the needle and syringe in the proper container.

General Rules For Injection

- Use the smallest effective dose. Further dosage increases may result in more adverse effects.
- Injections should be given at a maximum of three times per week or once every 2 days or as specified by your physician.
- Seek medical attention if an erection lasts longer than 4 hours.
- Sexual stimulation should occur after injection.